

Engine	Cummins QSM11
Gross Power	280 kW (375 hp) @ 2,000 rpm
Net Power	260 kW (349 hp) @ 2,100 rpm
Maximum Dig Depth	6,521 mm
Standard Bucket Capacity	3.2 m <sup>3</sup>
Operating Weight	46,500 kg

# 950E EXCAVATOR



TOUGH WORLD. TOUGH EQUIPMENT.

# 950E SPECIFICATIONS >>>

## ENGINE

Emission Regulation	Tier3 / Stage IIIA
Make	Cummins
Model	QSM11
Gross Power	280 kW (375 hp) @ 2,000 rpm
Net Power	260 kW (349 hp) @ 2,100 rpm
Peak Torque	1,898 N·m @ 1,400 rpm
Number of Cylinders	6
Displacement	10.8 L

## UNDERCARRIAGE

Shoe Width	600 mm
Number of Shoes per Side	51
Number of Upper Rollers per Side	2
Number of Bottom Rollers per Side	9

## BOOM & ARM

Boom Length	6,500 mm
Arm Length	2,550 mm

## BUCKET PERFORMANCE

Std. Bucket Heaped Capacity (Referenced)	3.2 m <sup>3</sup>
Min. Heaped Capacity of Bucket Options	2.2 m <sup>3</sup>
Max. Heaped Capacity of Bucket Options	3.2 m <sup>3</sup>

## TRACK DRIVE

Maximum Travel Speed	5.5 km/h
Drawbar Pull	386 kN

## SERVICE CAPACITIES

Fuel Tank	650 L
Engine Oil	37.8 L
Cooling System	50 L
Hydraulic Reservoir	290 L
Hydraulic System Total	520 L

## HYDRAULIC SYSTEM

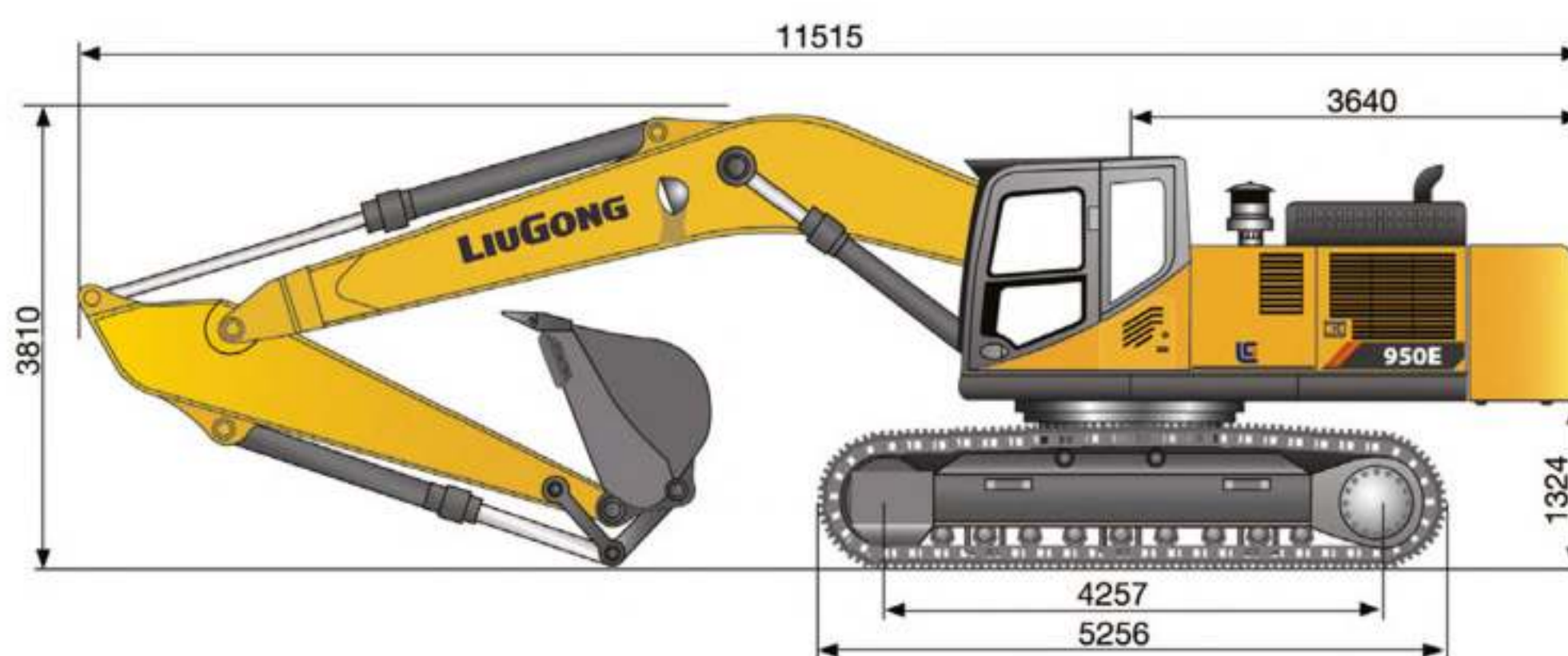
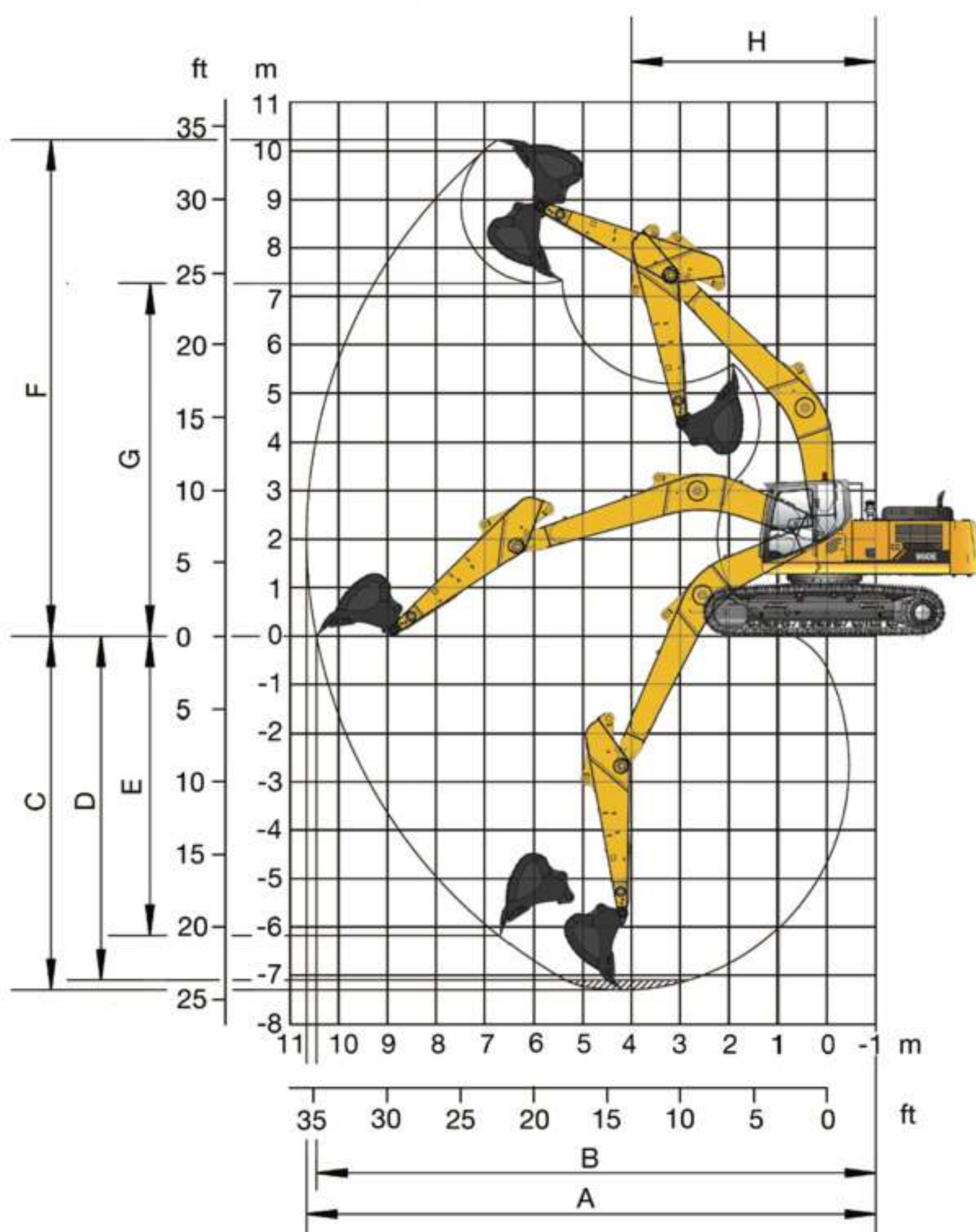
Main Pumps Total Flow	760 L/min
Relief Pressure, main	32.3 MPa
Relief Pressure, boost	35 MPa

## SWING SYSTEM

Swing Speed	8.5 rpm
-------------	---------

## WORKING RANGE

A. Max. Digging Reach	10,625 mm
B. Max. Digging Reach on Ground	10,388 mm
C. Max. Digging Depth	6,521 mm
D. Max. Digging Depth, 2.44 m (8') level	6,337 mm
E. Max. Vertical Wall Digging Depth	5,204 mm
F. Max. Cutting Height	9,977 mm
G. Max. Dumping Height	7,038 mm
H. Min. Front Swing Radius	4,645 mm
Bucket Digging Force (ISO)	280 kN
Arm Digging Force (ISO)	270 kN
Bucket Capacity	3.2 m <sup>3</sup>



Unit: mm



Specifications and designs are subject to change without notice. Machines shown may include optional equipment. LiuGong standard and optional equipment may vary from region to region. Please consult your LiuGong dealer for information specific to your area.



KEM Tower Lantai 15, Jl. Landasan Pacu Barat Kav. 2 B-10, Gunung Sahari Selatan, Kemayoran Jakarta Pusat 10610  
Phone : +62 21 6570 4111 (Hunting) | Fax : +62 21 6570 4110 | Email : info@probesco.com

Jakarta | Surabaya | Medan | Pekanbaru | Padang | Jambi | Lampung | Palembang | Bengkulu | Balikpapan | Banjarmasin | Pontianak | Sampit | Samarinda | Tarakan | Ketapang | Makassar | Manado | Timika | Kendari